

SCALE

D110



€182,000*

*Price is in EUR () and is an estimate for your own build based on the same specification

Make an inquiry

1-800-984-3355
sales@arkonik.com

| | |
|--|---------------|
| | 1991 |
| | Chawton White |
| | 5sp Manual |
| | 200Tdi |
| | Diesel |
| | 4 Seats |

SCALE

D110

€182,000*

*Price is in EUR () and is an estimate for your own build based on the same specification

EXTERIOR

| | |
|----------------------|--|
| Body colour | Chawton White |
| Paint finish | Solid |
| Bonnet | OEM original |
| Bonnet badge | Land Rover |
| Wheels | Steel 16" with beadlocks |
| Tyres | BFGoodrich® All Terrain T/A KO2 |
| Grille | KBX® Signature inc. light surrounds |
| Bumper | Standard with end caps and DRLs |
| Steering guard | Raptor Black |
| Headlights | WIPAC® Xenon / Standard |
| Wing-top air intakes | KBX® Hi-Force |
| Chequer plate | Wing-top and side sills (Copper Black) |
| Side steps | Fire & Ice (Ebony) |
| Work lamp | Rear-facing LED |
| Rear step | NAS |

INTERIOR

| | |
|-----------------|--|
| Seating trim | Vintage Thatch Brown Leather |
| Front row seats | Modular (heated) |
| Front storage | Lock box with 12v & twin USB ports |
| Steering wheel | Evander wood rimmed 15" |
| Gear knobs | Alloy |
| Gear gaiter | Matching leather |
| Door cards | Matching leather |
| Door furniture | Alloy |
| Floor coverings | Black carpet |
| Headlining | Black suede |
| Sound system | Pioneer® Touch screen display with Apple® CarPlay and reversing camera display |

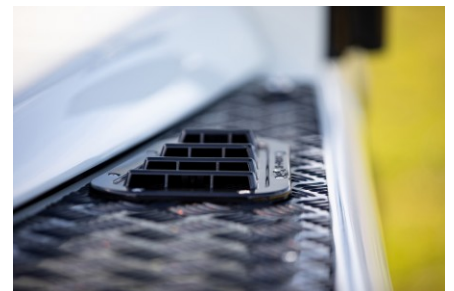
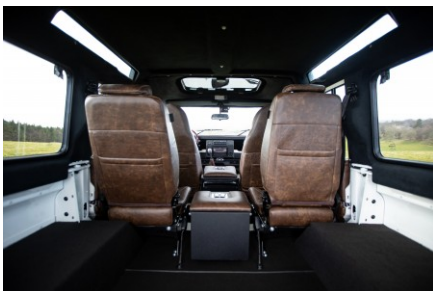
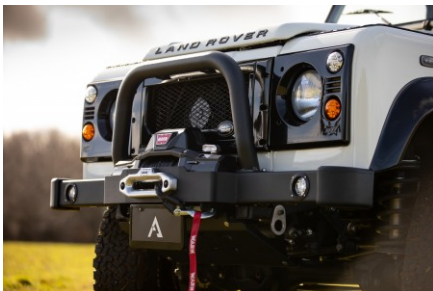


SCALE

D110

€182,000*

*Price is in EUR () and is an estimate for your own build based on the same specification



Make an inquiry

1-800-984-3355

sales@arkonik.com

RESTORED BY US. REIMAGINED BY YOU.

